

# Packers Plus® Product Overview



## QuickPORT Sleeve

### Overview

The QuickPORT™ sleeve is a mechanically activated flow port. It is run between two RockSEAL® II packers in the Packers Plus QuickFRAC® Batch Fracturing System to allow specific zones of the wellbore to be selectively fractured. The QuickPORT sleeve openings are available in a variety of sizes to optimize fracture treatments.

### Applications

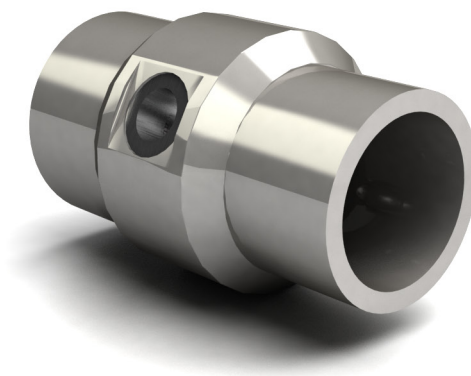
- Batch fracturing of multiple stages
- Open hole
- Horizontal and vertical wells
- HPHT applications
- Selective fracturing

### Features and Benefits

- Mechanically activated
- Various flow port sizes available
- Field-proven resistance to abrasion and erosion
- Corrosion resistant design

### Operation

The QuickPORT sleeve is assembled in the completion tool string, according to well requirements, and run into the wellbore to the planned depth. The appropriate ball size is inserted into the string and pumped down. The tool string is then pressured up to activate and open multiple, isolated QuickPORT sleeves within a treatment zone, allowing stimulation fluid to flow into the annulus.



*QuickPORT Sleeve*